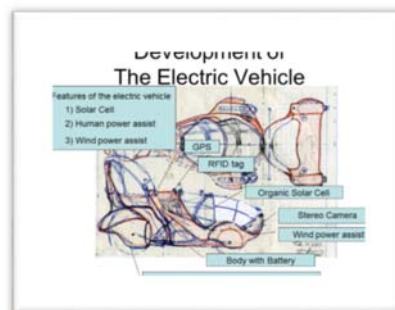
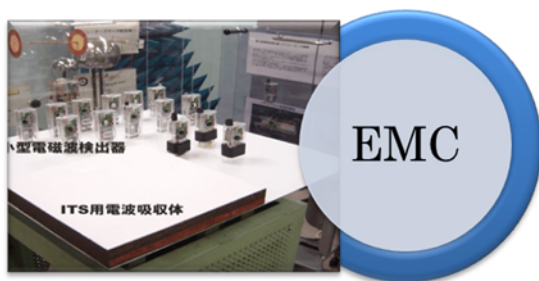


# Study on Electro Magnetic Compatibility and Its Applications

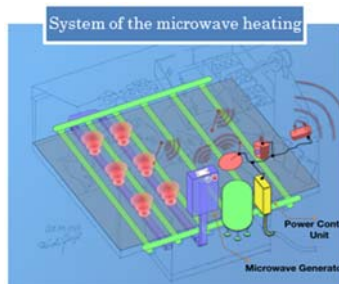


<b>Name</b>	Hiroki ANZAI	<b>E-mail</b>	anzai@tsuruoka-nct.ac.jp
<b>Status</b>	Associate Professor		
<b>Affiliations</b>	The Institute of Electronics, Information and Communication Engineers IEEE		
<b>Keywords</b>	Electromagnetic Absorber, Microwave heating, Biomass, Snow Melting System, Lightning		
<b>Technical Support Skills</b>	<ul style="list-style-type: none"> <li>• Design and Analysis of Semi-Anechoic Chamber,</li> <li>• Microwave system and Its applications</li> </ul>		

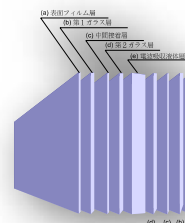
## Research Contents



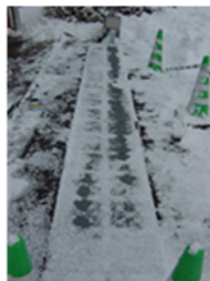
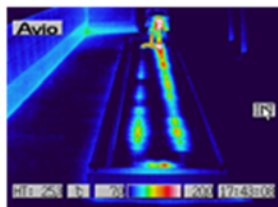
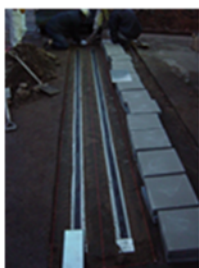
### 1. Application of The Heating Fermenting Bio-Mass Using Microwave



### 3. Innovation of Electromagnetic Wave Absorber



### 2. Microwave Snow Melting System



Exposure Test of Absorber

## Available Facilities and Equipment

3m-Type EMC Arch TEST Measurement Systems	Made by Anzai